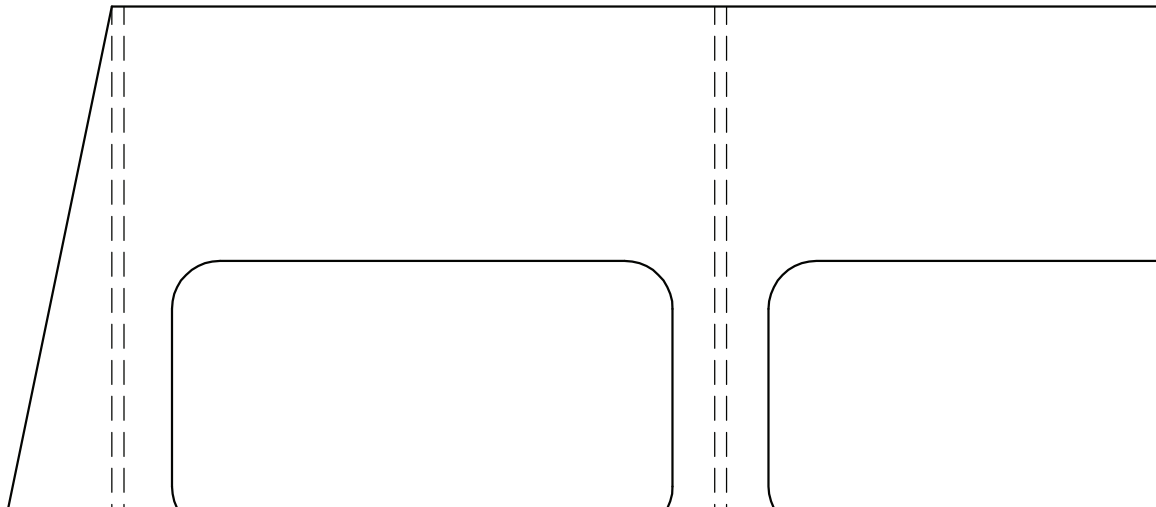
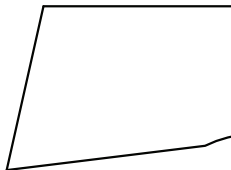
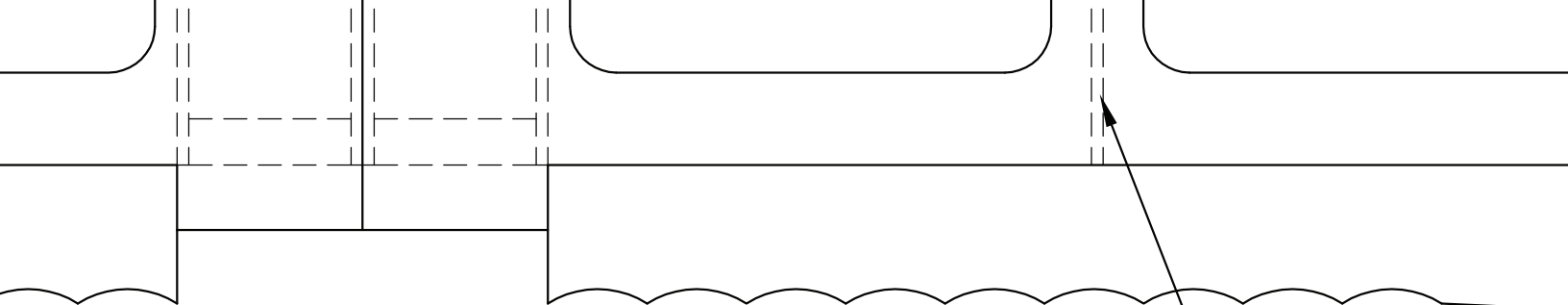
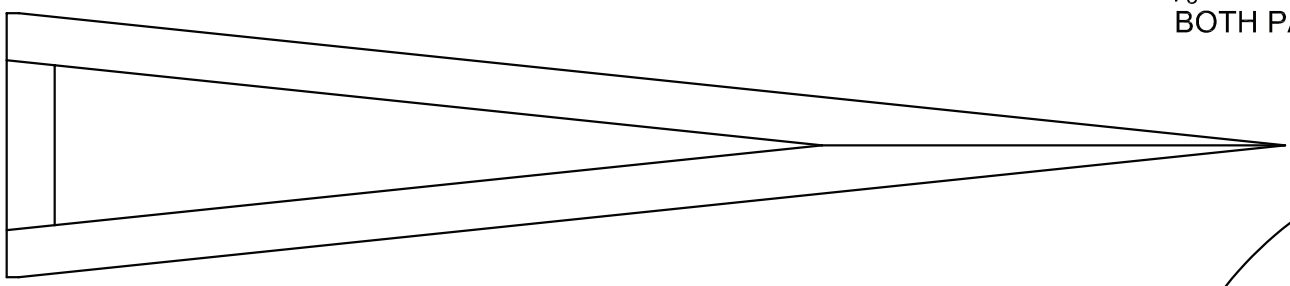


WING RIB
1/16" Balsa
MAKE 8

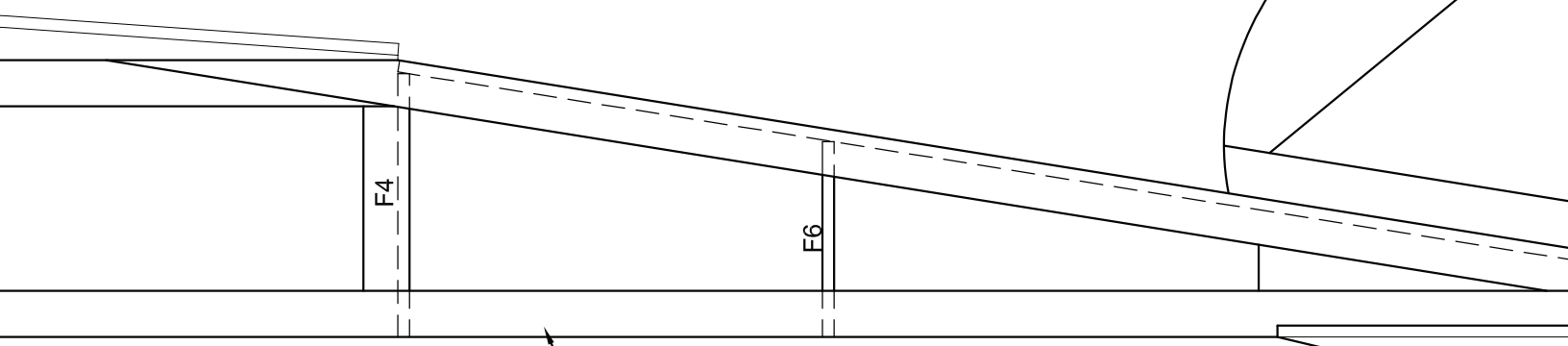




1/8" BLOCK UNDER THIS
BOTH PANELS TO SET D

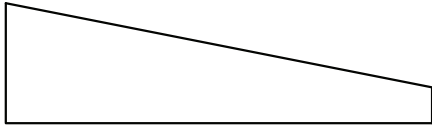


F7

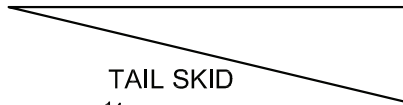


ALL FRAMES BUILT FROM
1/16"x1/4" Balsa UNLESS
OTHERWISE NOTED

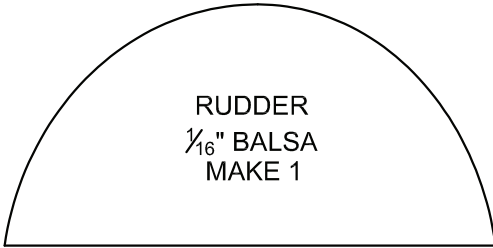
LIGHTWEIGHT
WHEELS



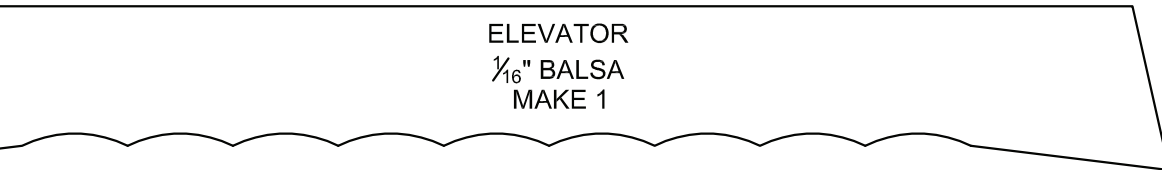
LANDING GEAR FAIRING
1/16" Balsa
MAKE 2



TAIL SKID
1/16" Balsa
MAKE 1

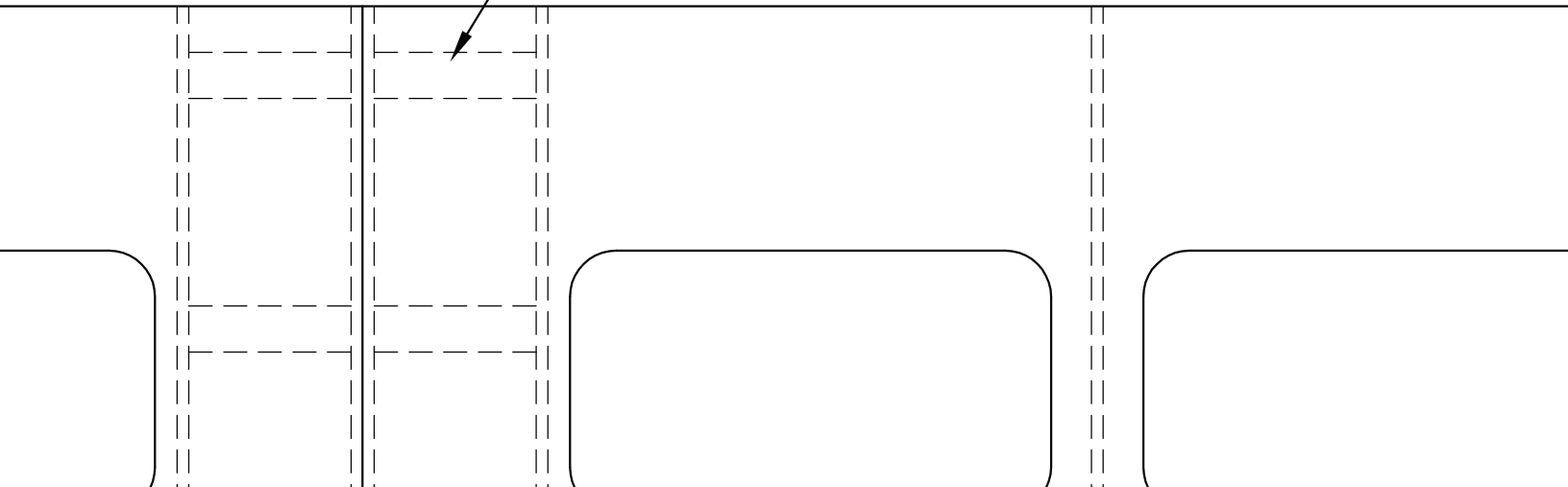


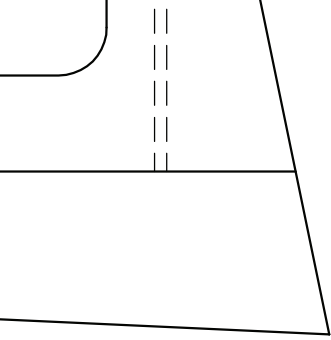
RUDDER
1/16" Balsa
MAKE 1



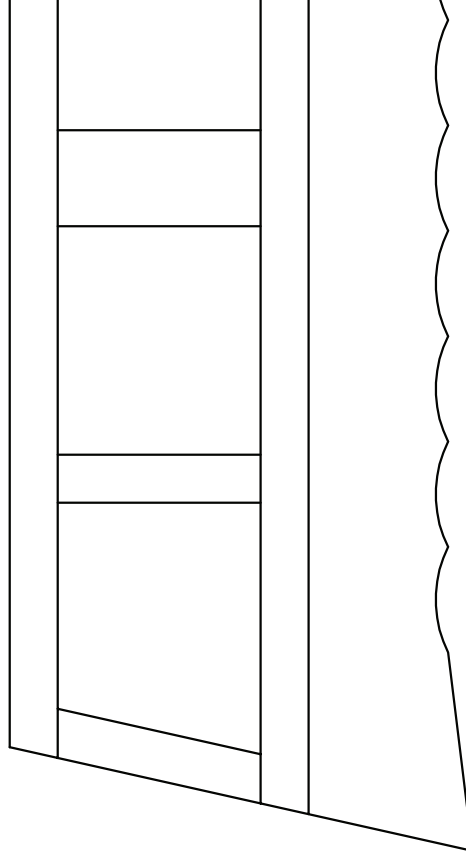
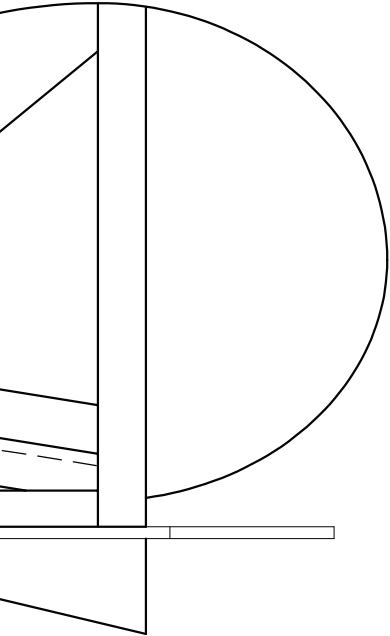
ELEVATOR
1/16" Balsa
MAKE 1

1/16" x 1/4" Balsa blocking
flush with bottom of ribs
glues to fuse to mount wing



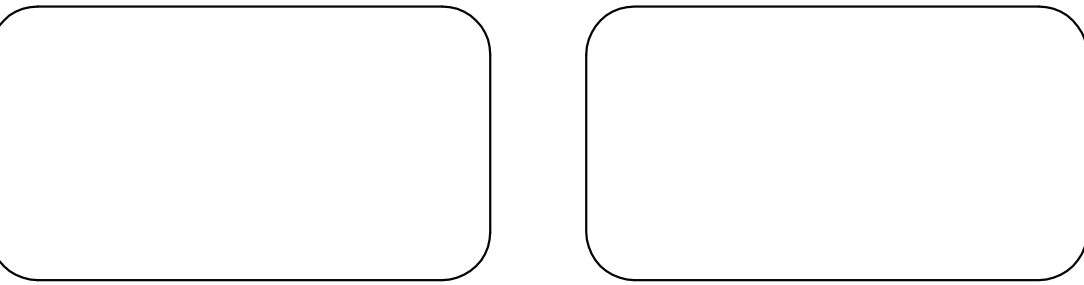


HIS RIB ON
ET DIHEDRAL



LANDING GEAR VIEWED FROM FRONT

WING PANEL
1/16" BALSA
MAKE 2



AILERON
1/16" BALSA
MAKE 2

